

North East SolidWorks User Conference



What's in your Toolbox?

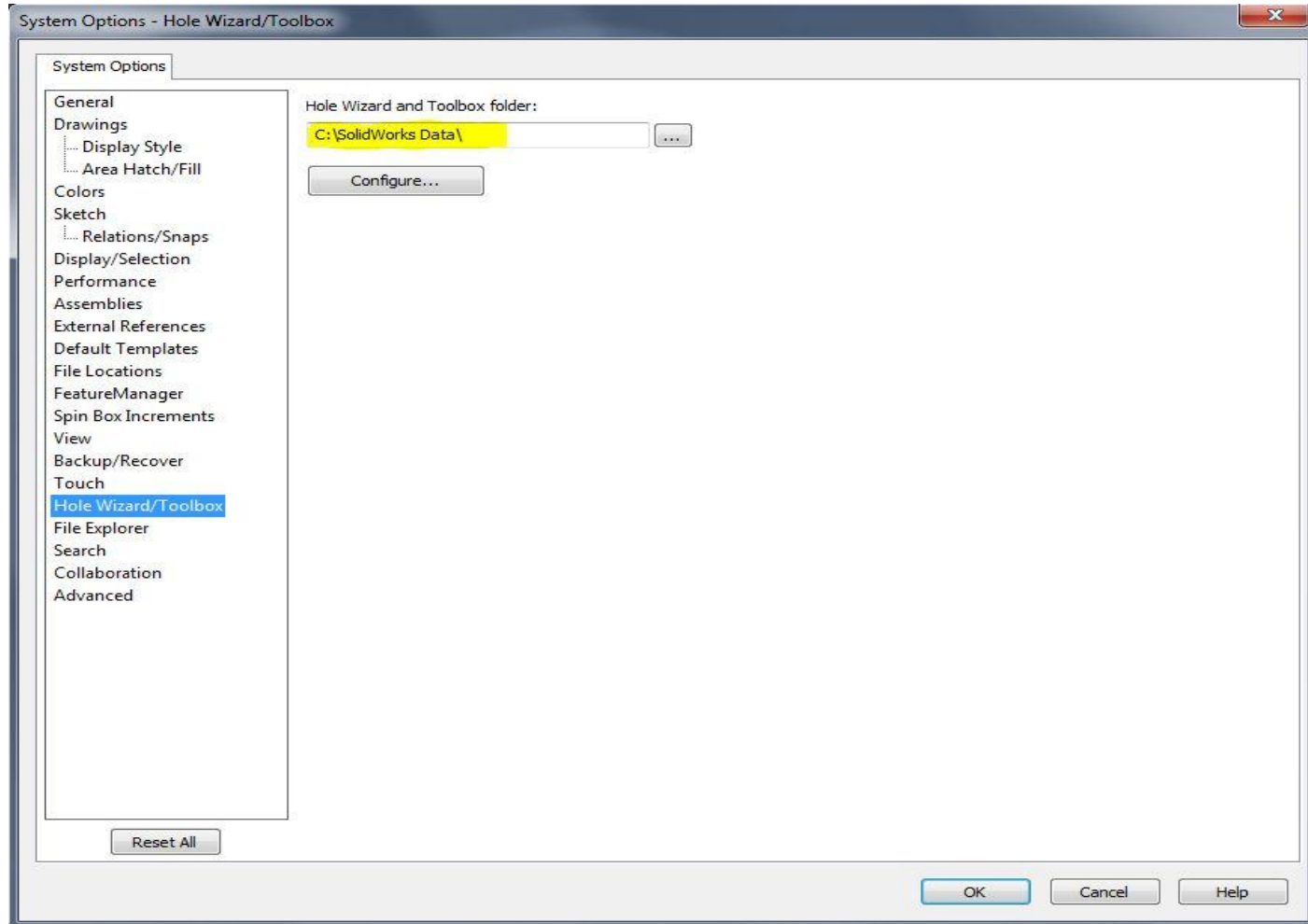
Jan Stoothoff

Application Engineer



- Agenda
 - Digging into the Toolbox
 - Configuring Toolbox
 - Creating Parts or Configurations?
 - Exporting – Importing Data
 - Updating Toolbox
 - Removing the internal I.D.
 - Configuration Publisher

- How do I set the path to Toolbox?

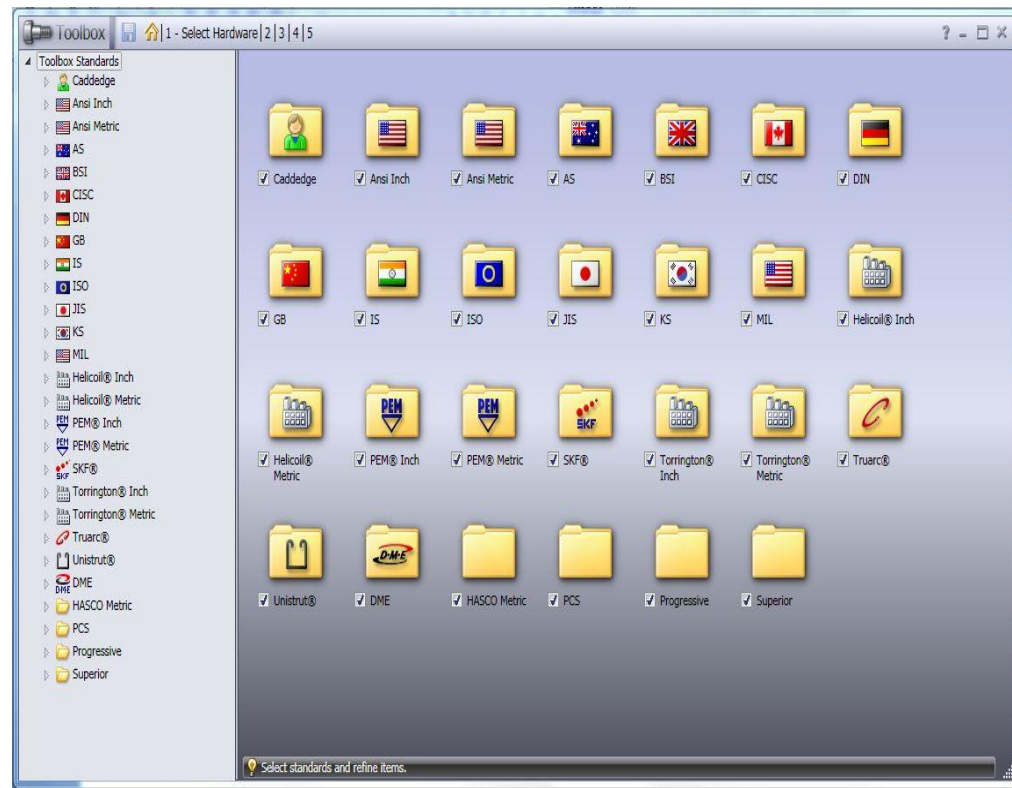


– Configuring Toolbox “Five Easy Steps”



➤ Always Go In Order

- Selecting What's in your Toolbox
 - Standards
 - Hardware



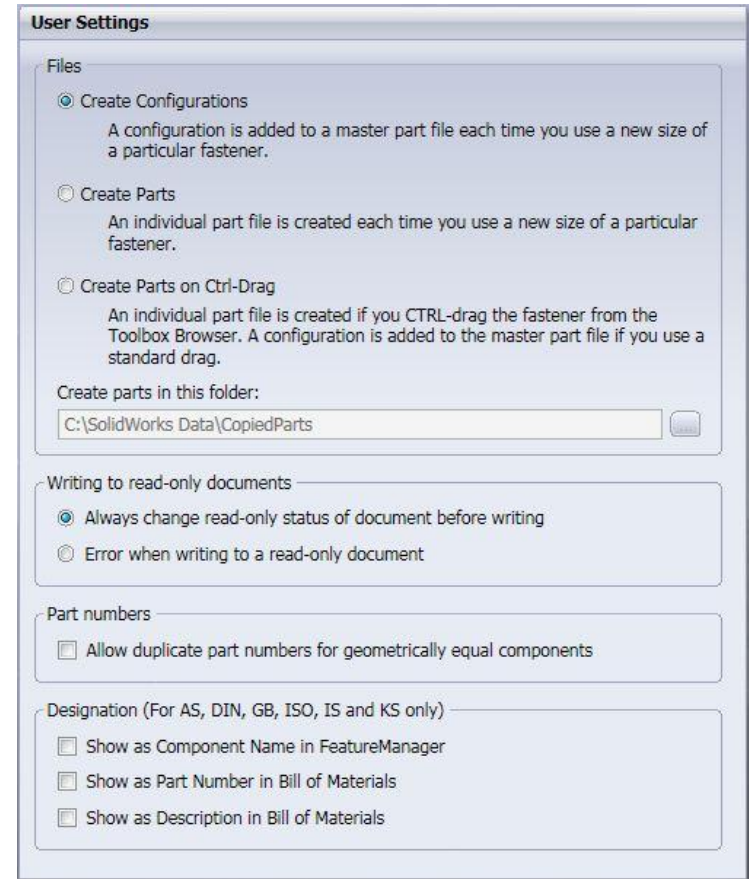
- What can be customized?
 - Standard Library Components
 - General – Alternate File Name
 - Turn On/Off – Component Lengths/Sizes
 - Thread Data – Simplified, Cosmetic or Schematic
 - Color
 - Custom Properties
 - Part Numbers
 - Description
 - Comments

- What can be customized?
 - With Copied Library Components
 - Same as Standard Library components...
 - Plus you can add, change
 - Thread Sizes, Thread Lengths, Thread Data or Screw Clearances

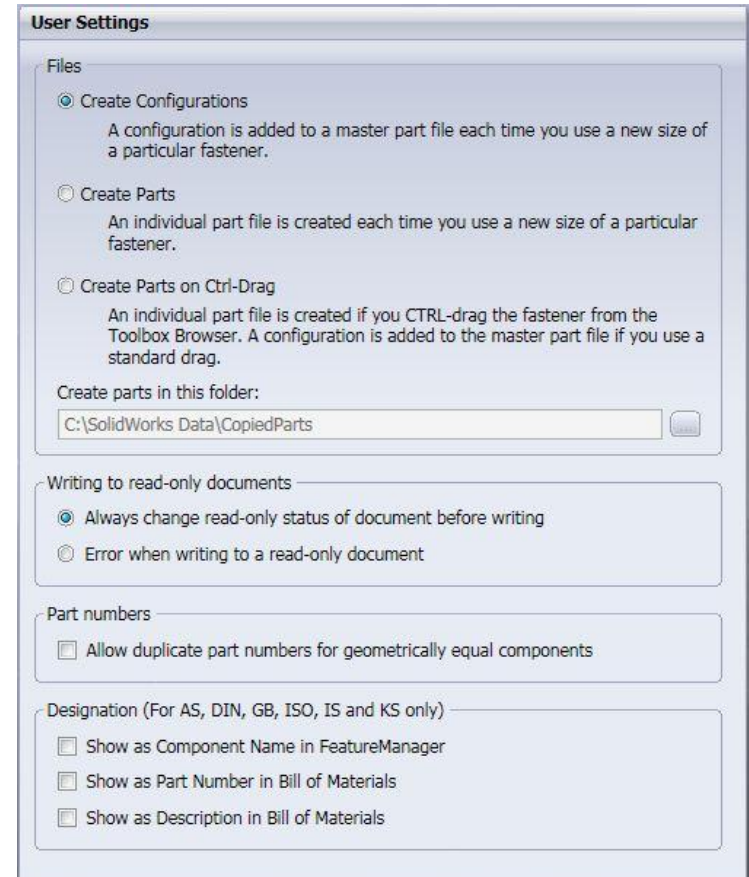
- Exporting and Importing your Data
 - When editing Part Numbers, Descriptions, Comments or Custom Properties, use export for Speed.



- User Settings
 - Configurations versus Parts
 - With Configurations all variations are in one file.
 - Configurations has a maximum limit of 250K parts
 - With Configurations there are less files, but they will generally be larger in size.
 - When opening parts with configurations all variations are loaded into local cache.
 - Some PDM Systems (Smart Team) do not support configurations
 - Create Parts
 - Set folder to a shared location.
 - Larger storage space required.

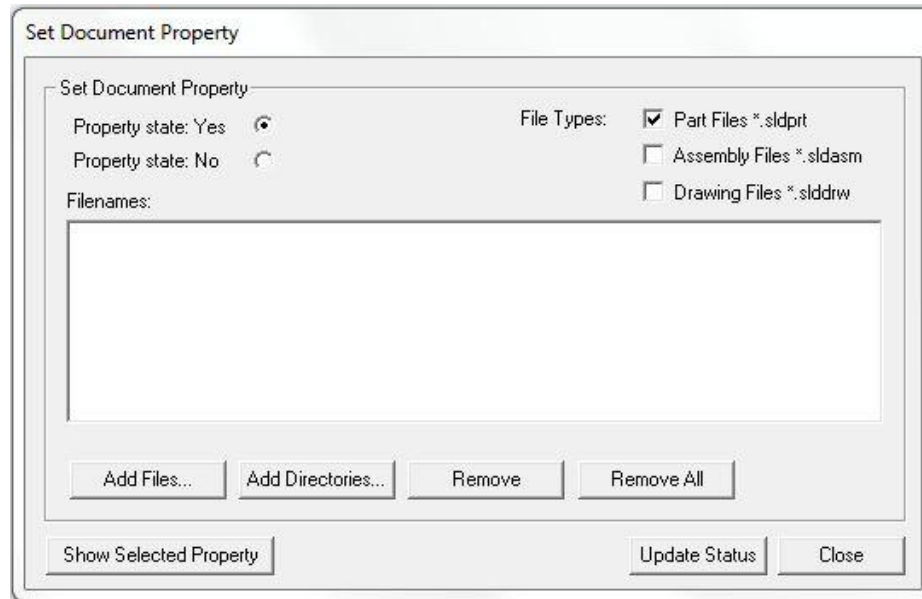


- Writing to Read-Only Documents
 - Always Change read-only status....
 - Specifies that Toolbox temporarily changes the read-only attribute of a file to make a change, such as creating a configuration for a new component size. After a change is done, Toolbox resets the file attribute to read-only.
 - Error when writing to a read only....
 - Specifies that Toolbox cannot change read-only documents; an error message appears.
 - Part Numbers
 - You can create more than one configuration of a part in the SolidWorks Toolbox database with the same part number if the parts are geometrically equal.
 - Designation
 - Feature Manager and BOM displays

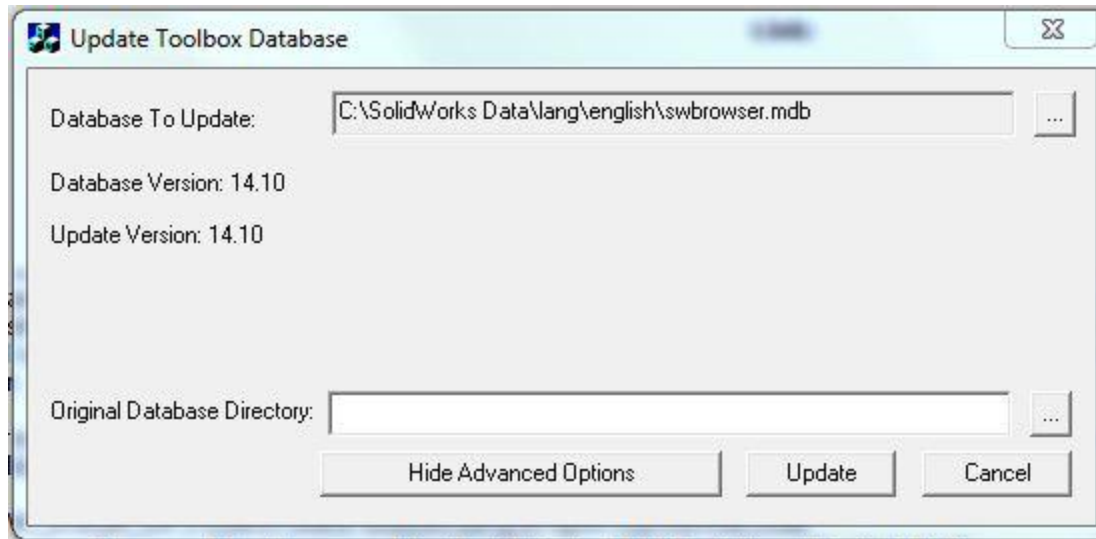


- Permissions
 - Allows control of who and what can be edited in the Toolbox.
- Smart Fasteners
 - Washer Sizes - Select from the options to limit the available washer types, depending on the size of the Smart Fastener.
- Automatic fastener change
 - You can make the fastener's length change when the hardware stack changes, and make the stack hardware size change when the fastener's size changes.
- Default Fasteners
 - You can specify the default Smart Fasteners components to use with different standards and hole types.

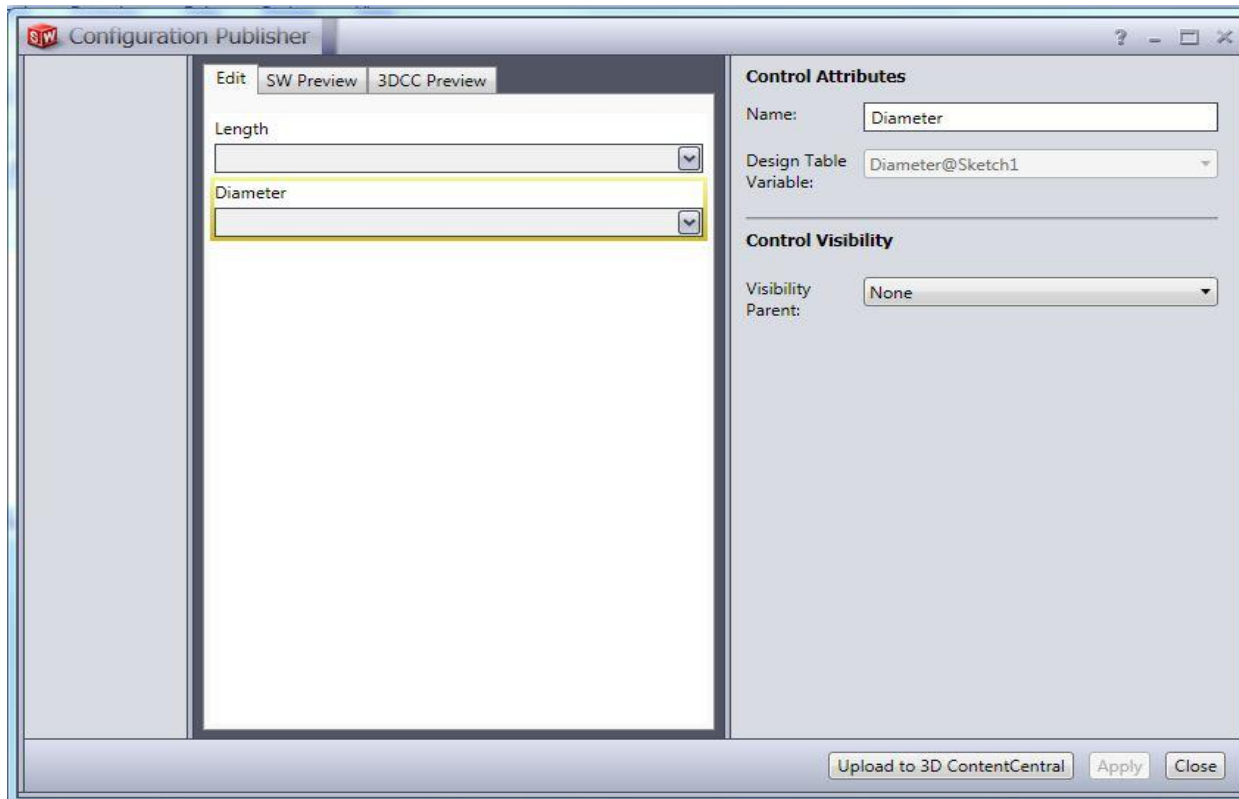
- Internal Flag Removing or Adding.
 - Toolbox items are not revision controlled
 - Toolbox items have a internal flag designating them as a “Toolbox Part”



- Updating the Toolbox
 - To Manually update the Toolbox database run the Updatebrowserdata utility located in your installation directory.



- Allows you to create parts with configurations and select them like Toolbox items



What can be modified in a copied Toolbox but not in a Standard Toolbox?



Thread Sizes,
Thread Lengths,
Thread Data or
Screw Clearances

• ANY QUESTIONS?