

# **North East SolidWorks User Conference**

# **Increase Productivity**

**Chris Duchaine**

**SolidWorks**

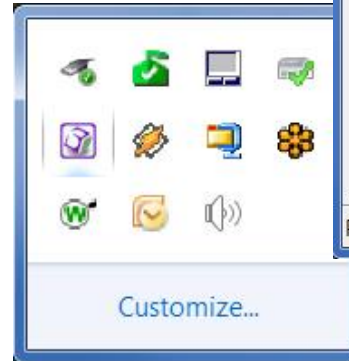
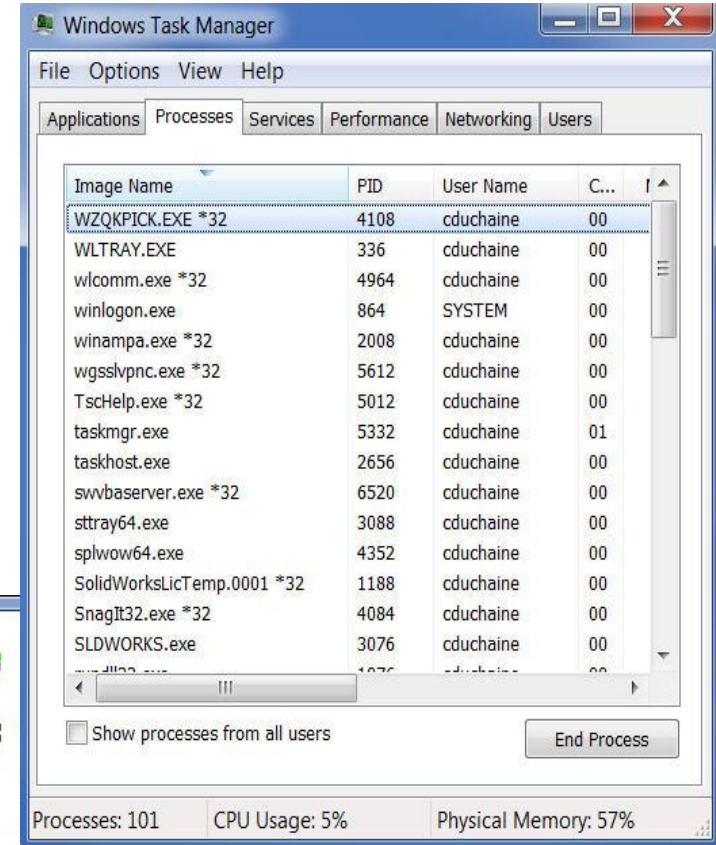
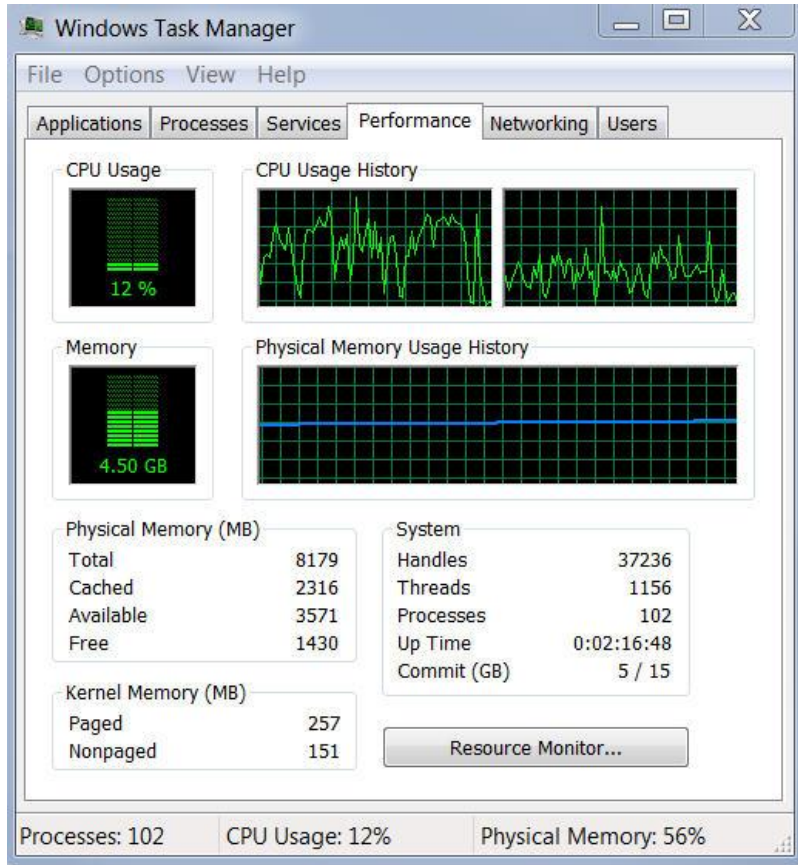
**CERTIFIED  
PROFESSIONAL**

**SolidXperts**



*Innovate with the Power of 3D*

- System Performance:



# System Resources taken over by **Antivirus Software:**



This is a list of directories and file types to exclude from scanning of your Anti-virus software.

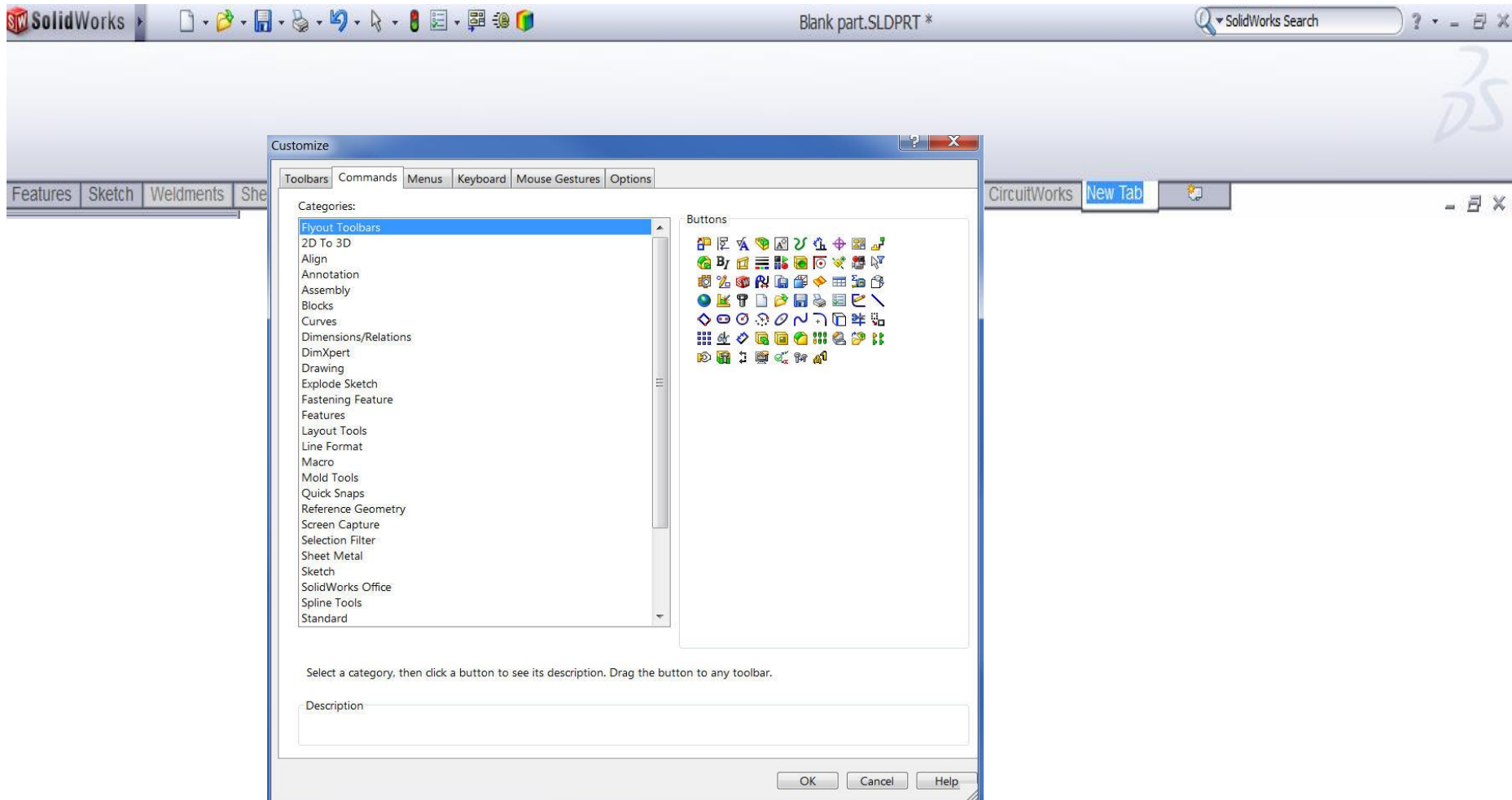
File Types:

- \*.sldasm
- \*.sldbkl
- \*.sldprt
- \*.slddrw
- \*.sldprt
- \*.asmdot
- \*.prtdot
- \*.drwdot
- \*.sldlfp
- \*.dwg
- \*.dxf
- \*.swp

Directories:

- C:\Solidworks Data
- C:\Program Files\SolidWorks
- C:\Program Files\SolidWorks Corp
- C:\Program Files\SolidWorks Enterprise PDM
- C:\Program Files\PDMWorks Workgroup
- C:\Program Files\common files\SolidWorks Shared
- C:\Documents and Settings\All Users\Application Data\SolidWorks

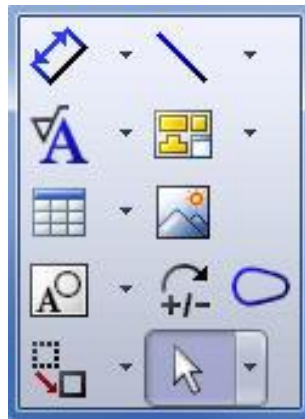
- Customizing Commands Manager:



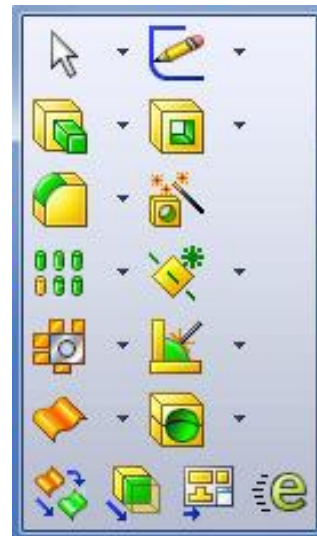
# Shortcut Bar “S-Key”:



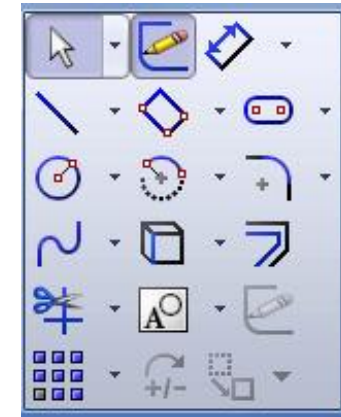
**Assembly  
State**



**Drawing  
State**



**Part  
State**



**Sketch  
State**

# Mouse

Customize

Toolbars Commands Menus Keyboard Mouse Gestures Options

Category: All Commands

Show only commands with mouse gestures assigned

Search for:

Enable mouse gestures

4 gestures

8 gestures

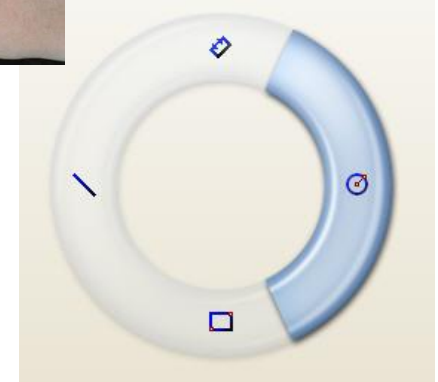
Print List...

Reset to Defaults

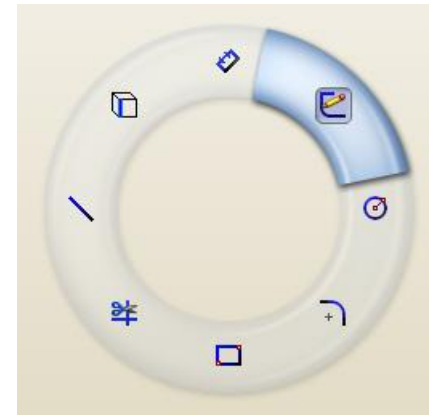
Category	Command	Part	Assembly	Drawing	Sketch
View	Zoom to Area..				
Insert	Sketch..				
Insert	Note..				
Insert	Model..				
Insert	Section..				
Insert	Detail..				
Insert	Center Mark..				
Tools	Line..				
Tools	Rectangle..				
Tools	Circle..				
Tools	Fillet..				
Tools	Convert Entities..				
Tools	Trim..				
Tools	Smart..				
Others	Front				
Others	Back				
Others	Left				
Others	Right				
Others	Top				
Others	Bottom				
Others	Trimetric				

Description

OK Cancel Help



4 Place Gestures



8 Place Gestures

## Customize HOT Key



Customize

Toolbars Commands Menus **Keyboard** Mouse Gestures Options

Category: All Commands [Print List... Copy List]

Show only commands with shortcuts assigned [Reset to Defaults]

Search for: [Remove Shortcut]

Category	Command	Shortcut(s)
File	New..	Ctrl+N
File	Open..	Ctrl+O
File	Close..	Ctrl+W
File	Save..	Ctrl+S
File	Print..	Ctrl+P
File	Properties..	F4
Edit	Undo..	Ctrl+Z
Edit	Redo..	Ctrl+Y
Edit	Repeat Last Command..	Enter
Edit	Cut..	Ctrl+X
Edit	Copy..	Ctrl+C
Edit	Paste..	Ctrl+V
Edit	Delete..	Delete
Edit	Rebuild..	Ctrl+B
View	Redraw..	Ctrl+R
View	Orientation..	SpaceBar
View	Zoom to Fit..	F
View	Zoom to Area..	W
View	Undo View Change..	Ctrl+Shift+Z
View	Planes..	Shift+P
View	Axes..	Shift+X
View	Sketches..	Shift+E
View	Routing Points..	Shift+C
View	Full Screen..	F11
View	FeatureManager Tree Area..	F9

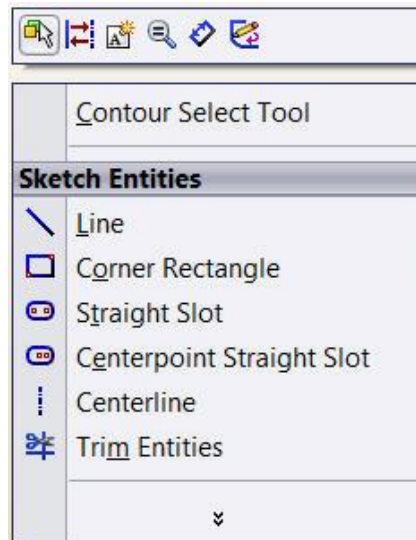
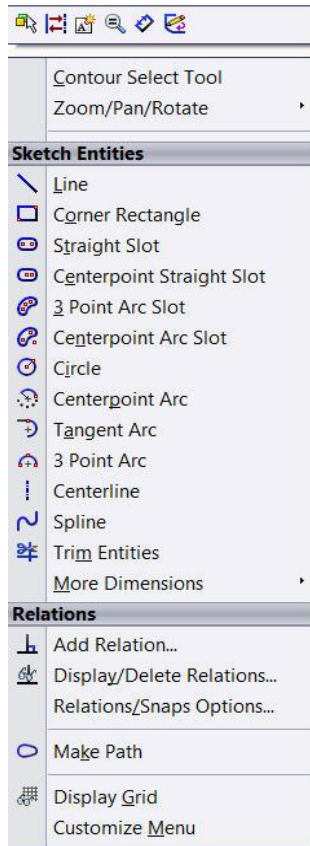
Description

[OK] [Cancel] [Help]

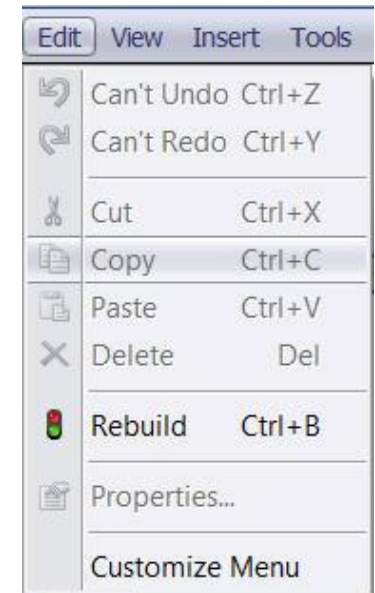
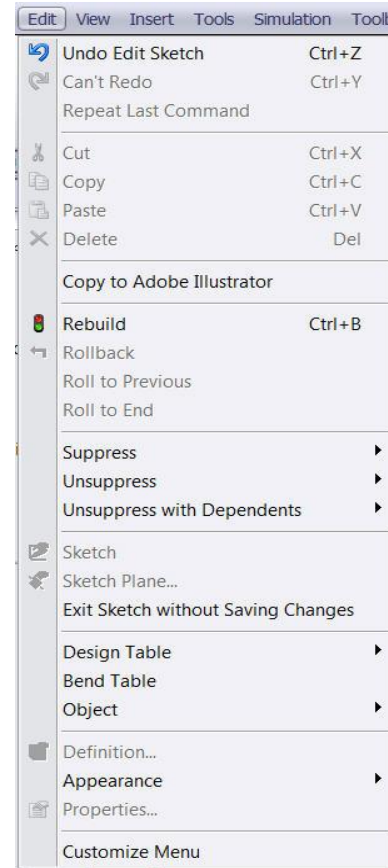
Category	Command	Shortcut(s)
File	New..	Ctrl+N
File	Open..	Ctrl+O
File	Close..	Ctrl+W
File	Save..	Ctrl+S
File	Print..	Ctrl+P
File	Properties..	F4
Edit	Undo..	Ctrl+Z
Edit	Redo..	Ctrl+Y
Edit	Repeat Last Command..	Enter
Edit	Cut..	Ctrl+X
Edit	Copy..	Ctrl+C
Edit	Paste..	Ctrl+V
Edit	Delete..	Delete
Edit	Rebuild..	Ctrl+B
View	Redraw..	Ctrl+R
View	Orientation..	SpaceBar
View	Zoom to Fit..	F
View	Zoom to Area..	W
View	Undo View Change..	Ctrl+Shift+Z
View	Planes..	Shift+P
View	Axes..	Shift+X
View	Sketches..	Shift+E
View	Routing Points..	Shift+C
View	Full Screen..	F11

# Customize Menu Look

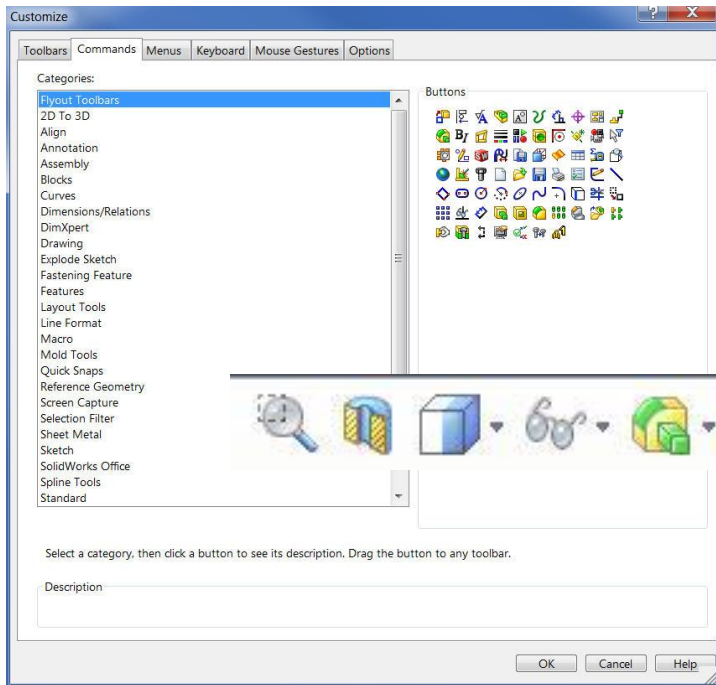
## RIGHT Click



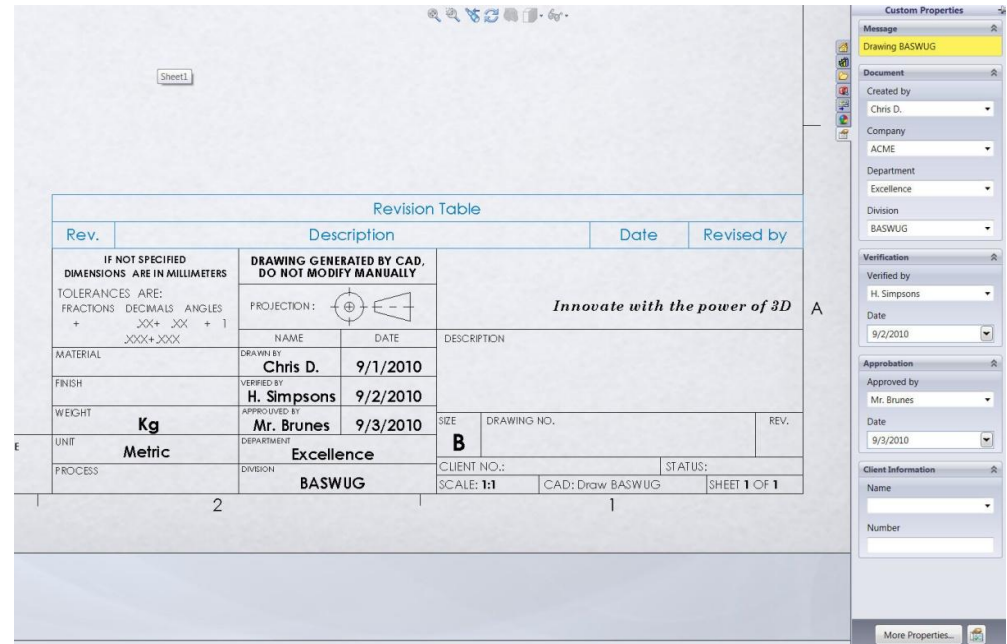
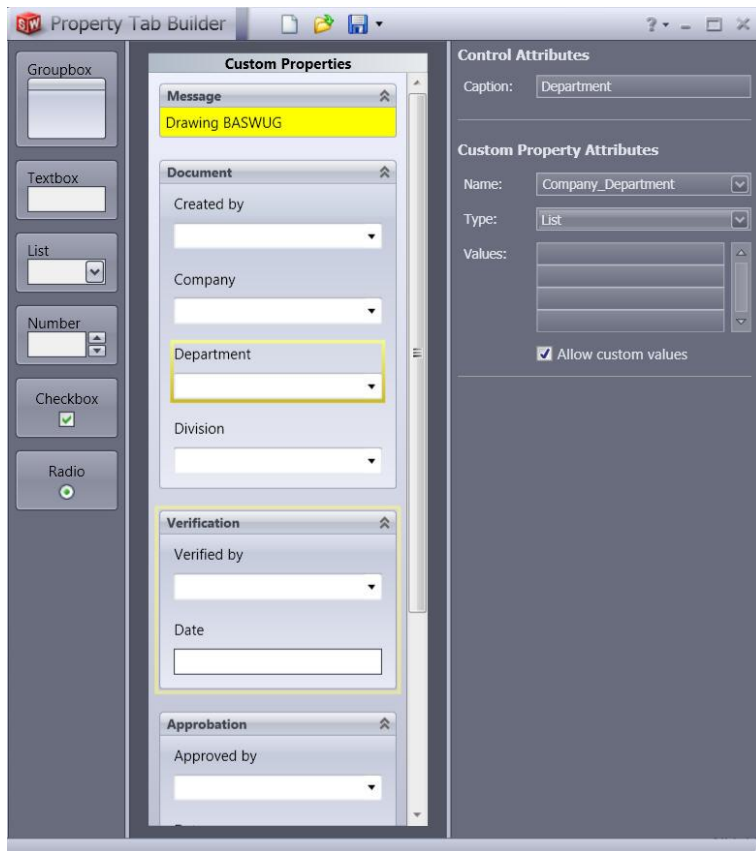
## EDIT Menu



# Customize “Heads Up Displace”



# SolidWorks Property Tab Builder:



## Template Types:

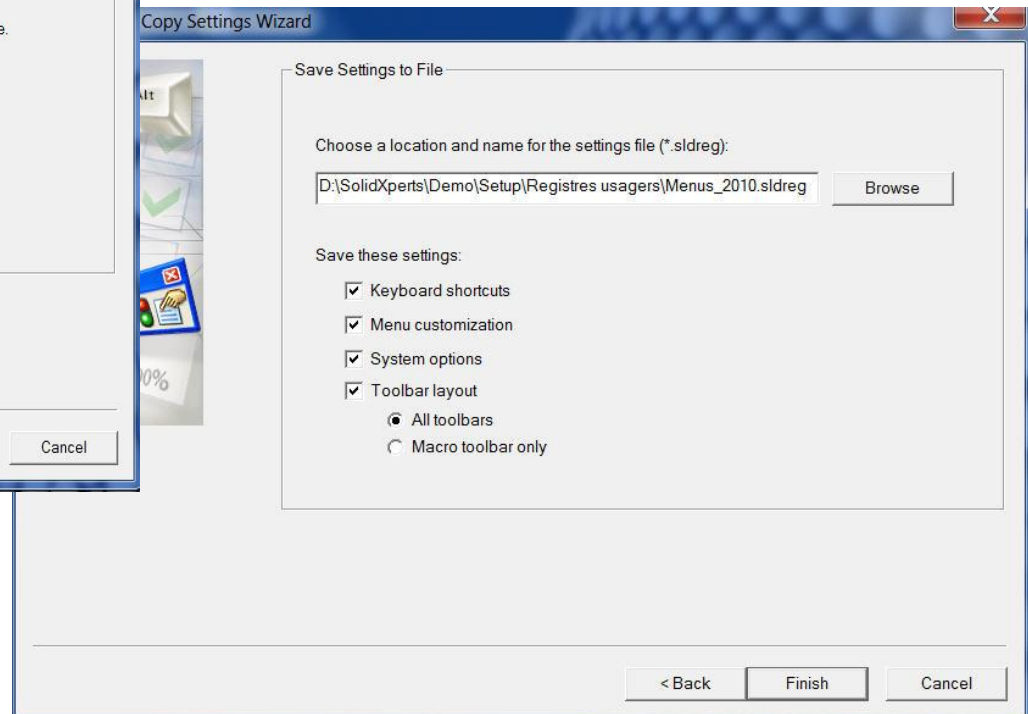
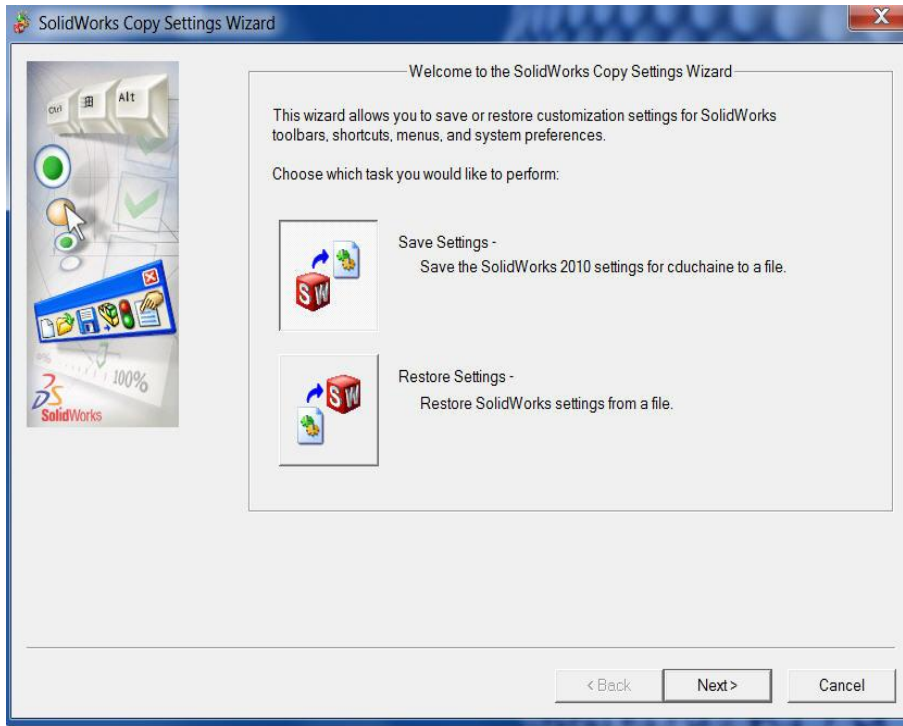
- \*.prtprp for parts
- \*.asmprp for assemblies
- \*.drwprp for drawings

# SolidWorks Tools Task Scheduler:

The screenshot displays the SolidWorks Task Scheduler application window. The left sidebar contains a menu of tasks such as 'Convert Files', 'Dissect Files', 'Update Files', 'Update Associated Files', 'Print Files', 'Import Files', 'Export Files', 'Update Custom Properties', 'Create Drawings', 'Convert to High Quality Views', 'Run Custom Task', 'Create eDrawings', 'Update Simulation', 'Design Checker', 'Render and Animation', 'Convert Workgroup PDM Files', 'Print Workgroup PDM Files', and 'Export Workgroup PDM Files'. The main area shows a 'Tasks' table with two entries.

Tasks							
Show Tasks		Future Date	Refresh	Copy	Delete	Print	Help
	#:	Title	Date	Time	Status	Computer name	Progress
1		Convert Files	9/3/2010	12:36:07 PM	Scheduled		
2		Convert Files	9/3/2010	12:36:07 PM	Scheduled		

## Save Custom Setting:



# Thanks

# Any Questions?

